

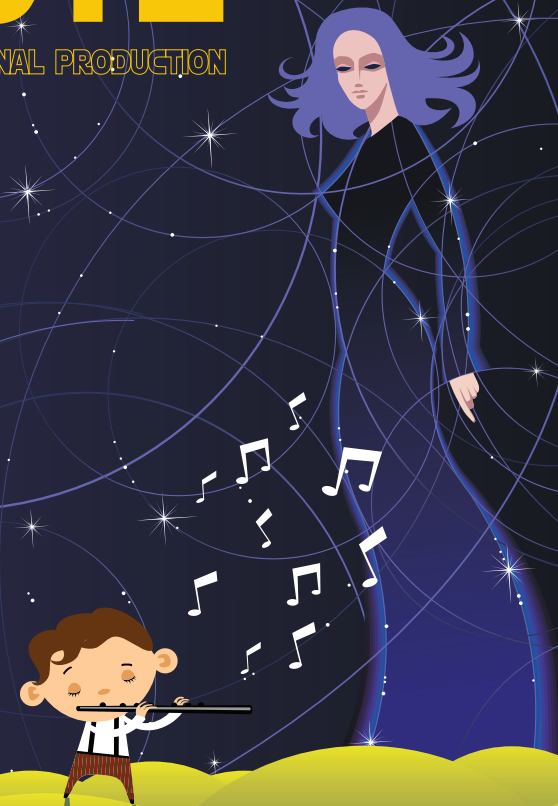
MOZART'S THE MAGIC FLUTE

AN OFtY ORIGINAL PRODUCTION

The Magic Flute is an enchanting introduction to the genius of Mozart. OFtY's space-age adaptation tells the story of the noble **Prince Tamino**, the heroic Princess **Pamina**, the birdman **Papageno**, the evil **Queen of the Night**, and her assistant, the **Three-headed Lady**.

Sixteen of your students will perform on stage as fanciful space creatures comprising **Sarastro** and his **"Alien Council of Wisdom."** They'll also appear as an enormous dragon!

The Magic Flute's beautiful melodies and comical characters delight youngsters, while thematic points concerning facing challenges and learning to forgive generate thoughtful discussion.



LEARN MORE AT: www.OFtY.org

The Magic Flute Sign up my school for:

- _____ In-school performance(s) at \$790EB/\$850***
\$450 due with reservation; *Balance due following show*
- _____ Package Deals at \$1,400 - **SAVE OVER 10%!!!**
1.) One in-school performance and class chats **OR**
2.) One in-school performance and one public performance

SCHOOL NAME _____

SCHOOL ADDRESS _____

CITY, STATE ZIP _____

SCHOOL PHONE _____

SCHOOL FAX _____

CONTACT NAME _____

CONTACT TITLE _____

CONTACT PHONE _____

CONTACT E-MAIL _____

PLEASE USE CALENDAR TO CROSS OFF DATES THAT **DO NOT** WORK DUE TO TESTING, INSERVICE, ETC.

FINAL SHOW DATE SCHEDULING based on date you make your school's deposit, touring logistics, and your school's availability.

*****Early Bird Special is \$790!**
Reserve by May 15 for Fall 2015 Tour. Reserve by October 15 for Spring 2016 Tour. After the dates above, rates rise to \$850.

QUESTIONS? (608) 277-9560 or use the email below!

LEARN MORE AT www.OFtY.org

PLEASE RETURN FORM VIA:

FAX: (608) 277-9570 **EMAIL:** booking@operafortheyoung.org

MAIL: OPERA FOR THE YOUNG
6441 ENTERPRISE LANE, SUITE 207
MADISON, WI 53719

- For greatest date selection, be sure to book your show by May !!
- Schools that reserve by April 15 will receive an invitation to join the **Be A Designer Contest!**

• **CALENDAR** - Please cross off the dates that **do not** work.

OCTOBER 2015					JANUARY 2016				
M	T	W	R	F	M	T	W	R	F
				9	18	19	20	21	22
12	13	14	15	16	25	26	27	28	29
19	20	21	22	23					
26	27	28	29	30					

FEBRUARY 2016					MARCH 2016					APRIL 2016				
M	T	W	R	F	M	T	W	R	F	M	T	W	R	F
1	2	3	4	5	1	2	3	4					1	
8	9	10	11	12	7	8	9	10	11	4	5	6	7	8
15	16	17	18	19	14	15	16	17	18	11	12	13	14	15
22	23	24	25	26	21	22	23	24	25	18	19	20	21	22
29					28	29	30	31	25	26	27	28	29	

Be sure to save your changes before returning to OFtY