

CINDERELLA

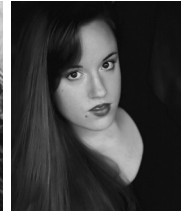
Saira Frank – MM (Univ. of WI), Opera for the Young (OFY), Grant Park, Madison Opera, Elgin Opera, Music by the Lake, Cedar Rapids Opera Theatre, Teatro Piccinni, National Conservatory of Nantes, Candid Concert Opera, Fresco Opera Theatre, UW Opera

Rainelle Krause* – MM (Indiana Univ.), IU Opera, Taos Opera Institute, Heidi Grant Murphy Graduate Workshop, IES Vocal Workshop Vienna, Austria

Diana Stoic – MM (Chicago College of Performing Arts at Roosevelt Univ.), OFY, Des Moines Metro, DuPage Symphony, OPERA Iowa, Opera Santa Barbara, Cedar Rapids Opera Theatre, Intermezzo Opera



Saira Frank



Rainelle Krause

PRINCE CHARMING

Mark Craig – MM (New England Conservatory of Music), OFY, Sarasota Opera, Brevard Music Center's Janiec Opera Company, Anchorage Opera Studio Theatre

Nick Pulikowski* – MM (Indiana Univ), Indiana Univ., DuPage Opera New Philharmonic, Pine Mountain Music Fest., Apollo Chorus of Chicago, Opera Festival of Lucca Italy, American Music Theater Project

J. Adam Shelton* – MM (Univ. of Arizona), Madison Savoyards, UW Opera, Des Moines Metro, Candid Concert Opera, La Musica Lirica, Lake Placid Vocal Institute, Scottsdale Symphony, Tuscon Chamber Orch., Southern AZ Symphony Orch.



Diana Stoic



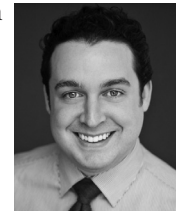
Mark Craig

MADAME/FAIRY GODMOTHER

Melissa Arning – BM (Cleveland Institute of Music) OFY, Cleveland Opera, Lyric Opera Cleveland, Petite Opera, Katydid Productions, Music by the Lake, Chamber Opera Chicago, American Chamber Opera, Bowen Park Opera, Chicago Symphony Orchestra

Kathleen Butitta – MM (Univ. of WI), OFY, Madison Opera, Madison Savoyards, Stoughton Opera Co., Cecilia Singers, UW Opera

Sara Litchfield – MM (Chicago College of Performing Arts at Roosevelt Univ.), OFY, New Orleans Opera, Opera Southwest, Gilbert and Sullivan Co. of Chicago, Elgin Opera, Tomorrow River Opera, Chicago Opera Theater, Cedar Rapids Opera Theater, Opera in the Ozarks, Chicago Symphony Chorus, Emerging Artist Division of Novo Artist's Management



Nick Pulikowski



J. Adam Shelton

CINDERELLA'S FATHER

Alexander Adams-Leytes* – MM (Univ. of MN), Lyric Opera Studio Weimar Germany, Tusciana Operafestival Italy, Twin Cities Lyric Theater, College of St. Benedict's/St. John's Univ, Gilbert and Sullivan Very Light Opera

Chadley Ballantyne – DMA, ABD (Univ. of IL), OFY, American Chamber Opera, Metropolitan Opera National Council District Winner, Sugar Creek Symphony & Song, Light Opera Works, Union Avenue, Austrian American Mozart Academy, Utah Festival Opera

Andy Papas – MM (Univ. of Houston), OFY, Boston Opera Collaborative, Union Avenue Opera, Opera New Jersey, St. Petersburg Opera, Opera Cleveland, Univ. of Houston-Moores Opera, Michigan Opera Theatre, Univ. of MI, Halifax Summer Opera



Melissa Arning



Kathleen Butitta

PIANISTS

Erin Crabb* – BA (Illinois Wesleyan Univ.), Rocky Mountain Repertory Theatre, UW Madison Theatre, IWU Theatre Dept. and School of Music

Vince Fuh – BM (Univ. of WI), OFY, Oakwood Chamber Players, Madisalsa, El Clan Destino, Bach Dancing and Dynamite Society of Wisconsin, Madison Symphony Orch.

Steve Radtke – BM (UW - SP), OFY, UWSP Opera Workshop, Brevard Music Fest., Madison Youth Choirs



Sara Litchfield



Alexander Adams-Leytes

CHORUS/CAMEOS Elementary student choristers at each school play mice and horses, nobles, and King and Queen. School faculty play the roles of the Stepsisters.

CINDERELLA PRODUCTION TEAM

Diane Garton Edie – OFY Artistic Director; *Cinderella* co-creator, librettist, stage director

Dan Plummer – OFY General Director; *Cinderella* co-creator, music adaptor and arranger

Jeffrey Sykes – OFY Music Director; *Cinderella* Music Director

Karen Brown-Larimore – *Cinderella* Costume Designer; OFY Resident Designer

Tiffany Fier – *Cinderella* Set and Props Designer; OFY Resident Designer



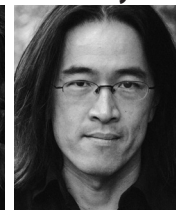
Chadley Ballantyne



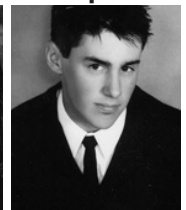
Andy Papas



Erin Crabb



Vince Fuh



Steve Radtke